



Martha Chapman (1827-1916) Arza W. King (1820-1896)



Melissa J. Blanchard (1864-1920)



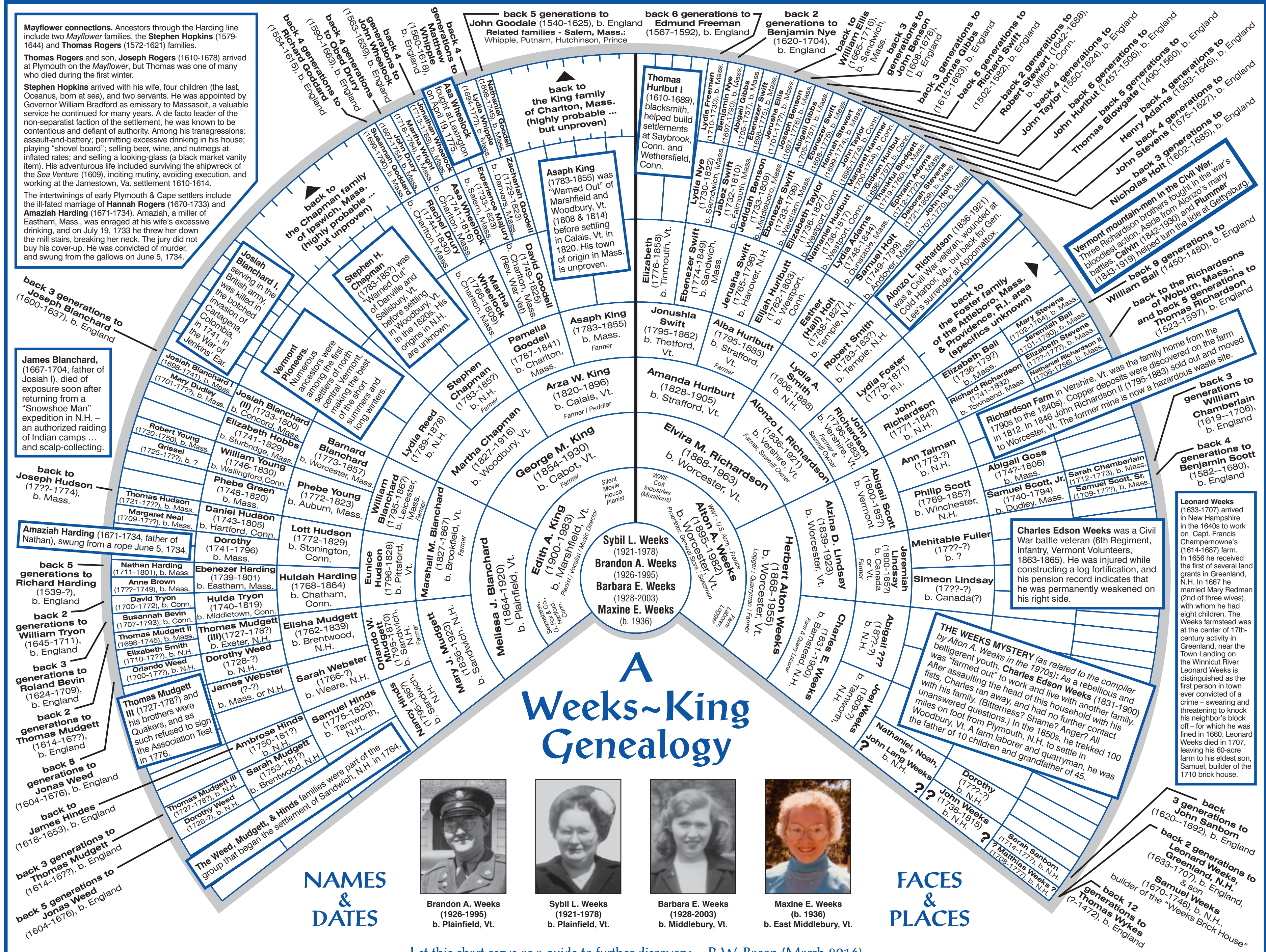
George M. King (1854-1930)



Etta Mae King (1884-1953) Myrtle Belle King (1890-1964) Laura Anna King (1894-1985) Edith Alice King (1900-1983)



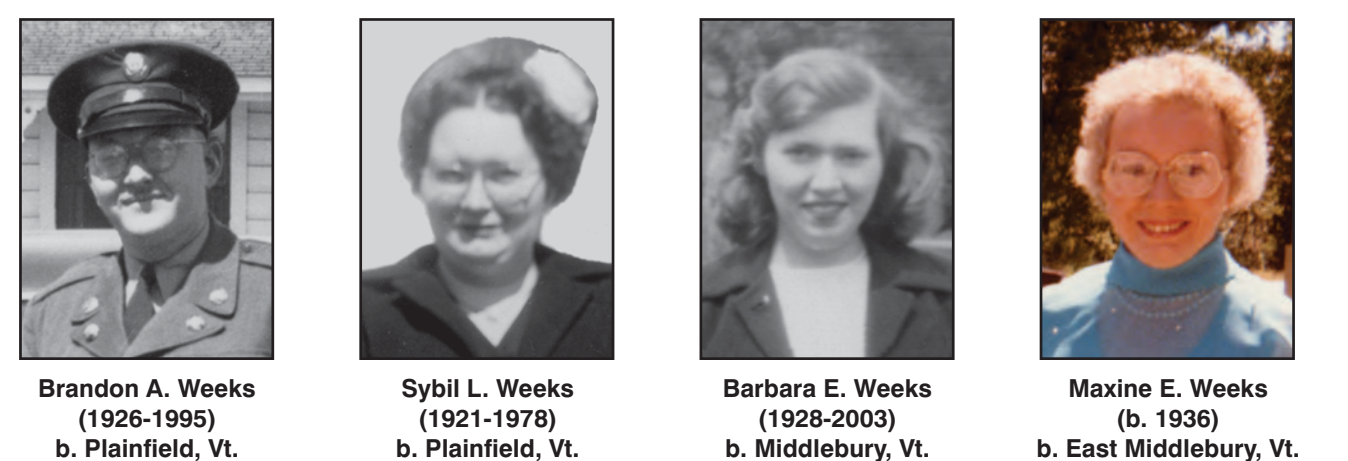
Edith Alice King (1900-1983) "... on the track" c. 1920.



A Weeks~King Genealogy

NAMES & DATES

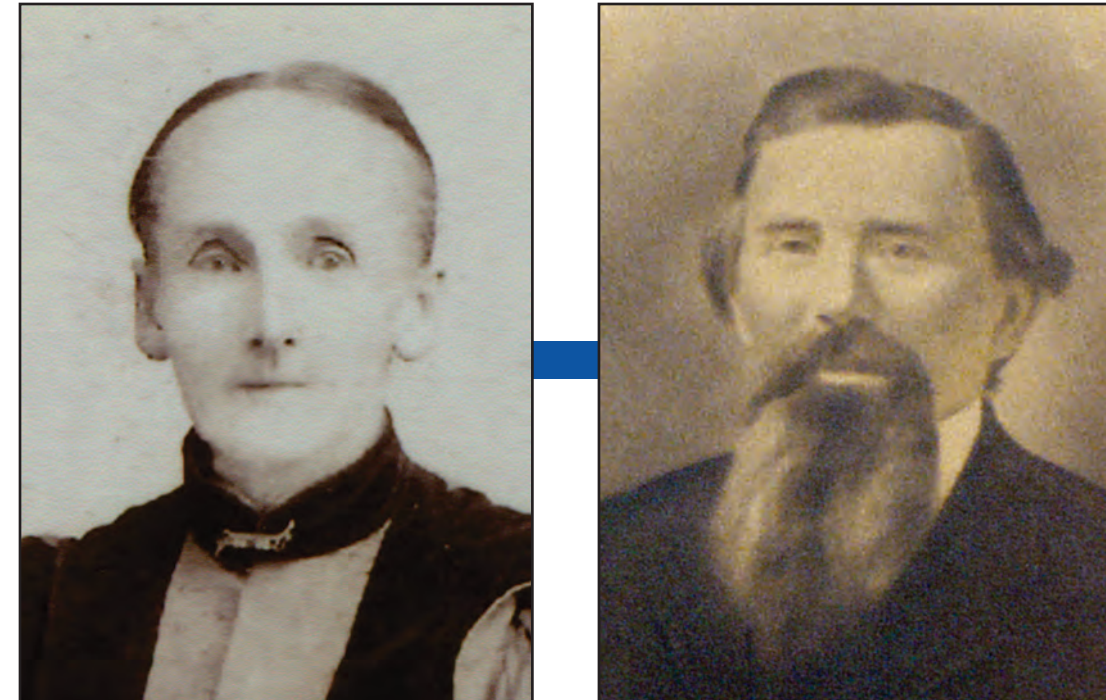
FACES & PLACES



Brandon A. Weeks (1921-1978) Sybil L. Weeks (1921-1978) Barbara E. Weeks (1928-2003) Maxine E. Weeks (b. 1938)



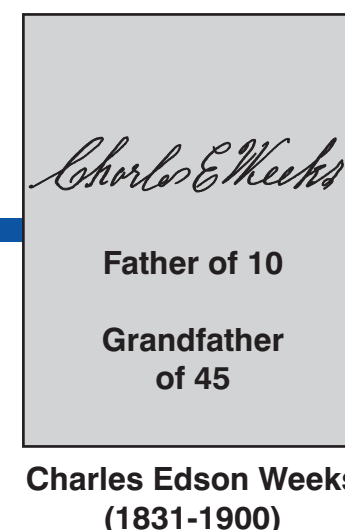
Greenland, N.H., Weeks Family Farmstead, 1656-1968. Weeks Brick House (1710). Tamworth, N.H., Weeks Family, 1790s-1840s. The compiler... with Aunt Maxine (1950?). Charlton, Mass., Wheelock, Goodell, & King Families, 1740s-1780s. Dunstable, Mass., Blanchard Family, 1680s-1710s. Sandwich, N.H., Weed, Mudgett, Hinds Families, 1780s-1850s.



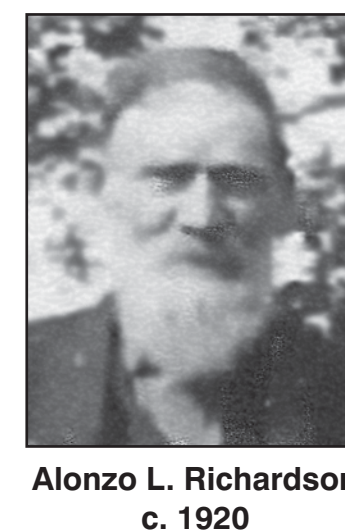
Amanda Hurlbutt (1828-1905) Alonzo L. Richardson (1836-1921)



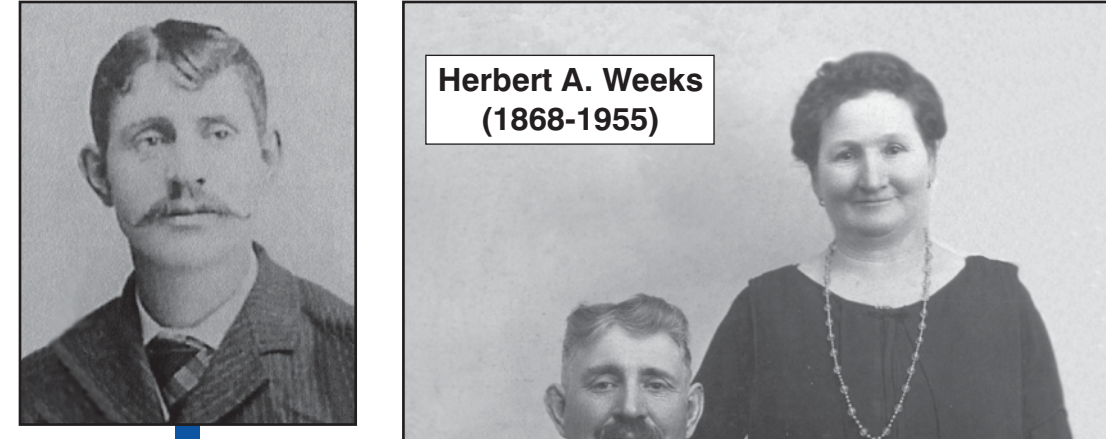
Alzina D. Lindsay (1839-1923)



Charles Edson Weeks (1831-1900)



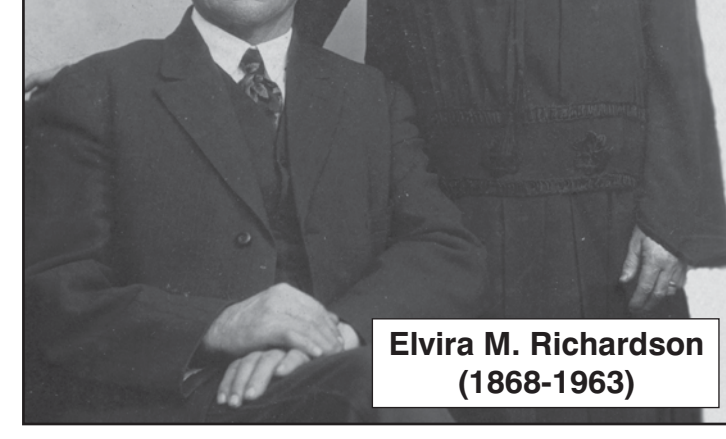
Alonzo L. Richardson c. 1920



Herbert A. Weeks (1868-1955)



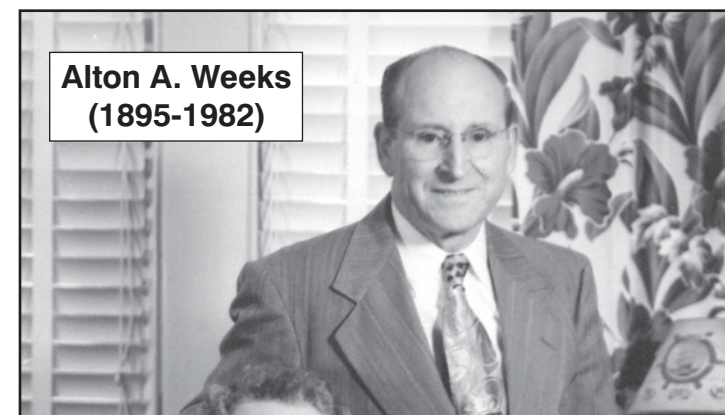
Elvira M. Richardson (1868-1963)



Elvira M. Richardson (1868-1963)



Back row, l. to r.: Alton A. Weeks (1895-1982), Lena Eva Weeks (1895-1982), Blanche Anabelle Weeks (1891-1985), Maude Edna Weeks (1893-1985). Middle row, l. to r.: Elvira (Richardson) Weeks (1868-1963), Herbert Charles Weeks (1868-1955), Herbert Alton Weeks (1868-1955). Front row, l. to r.: Hazel Amanda Weeks (1900-1985), Helen Elzina Weeks (1900-1991).



Alton A. Weeks (1895-1982)



Alton A. Weeks (1895-1982)



Edith A. King (1900-1983)



Edith A. King (1900-1983)

Let this chart serve as a guide to further discovery. - R.W. Bacon (March 2016)